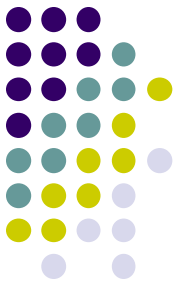


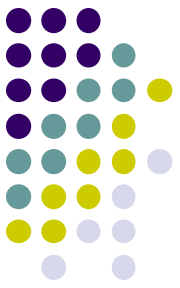
A Brief Tribute to Our Church Buildings 1845-2007

Depicting our First Church - Known as the Little Tabernacle



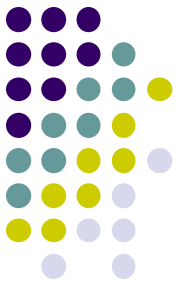
No photos or drawings of our first church, a small wooden chapel at 347 E. Genesee St., are available. However, this depiction of an actual Unitarian chapel in the 1800s suggests how it might have looked. Ours was erected in 1839 for a cost of \$607.

Our Second Church - Church of the Messiah (1843-1885)



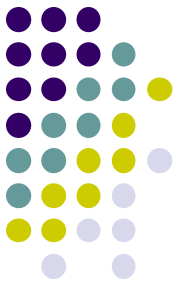
Built on Lock St. (now State St.) at the south corner of Burnet Ave. for around \$8,000, it was dedicated Nov. 23, 1843. The picture above is actually the 2nd building as the 1st building, with a spire, was destroyed in an 1852 hurricane. This second building was built on the same spot minus a spire, for \$10,000 and rededicated April 14, 1853.

Our Third Church – The May Memorial Church (1885-1964)



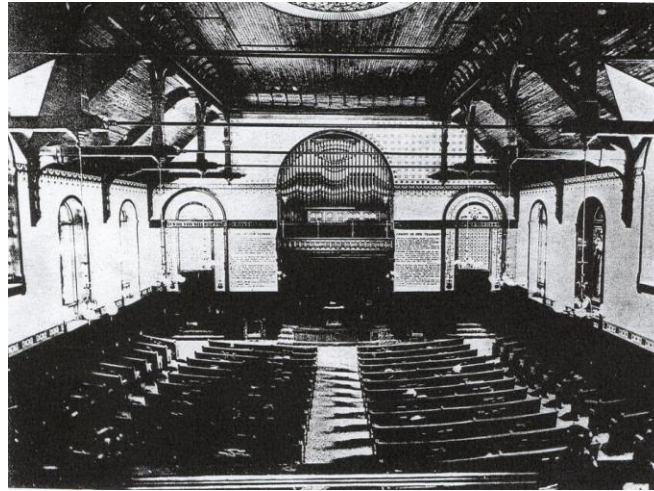
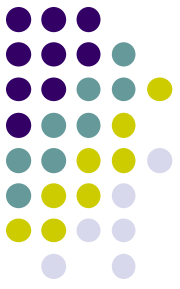
Built at 472 James St. for around \$50,000, it was dedicated Oct. 20, 1885. The church operated an USO-type organization, The Army Club, during WWI for soldiers being trained at the State Fairgrounds. During WWII our church women cooked and served lunch to children in the area. Church members also played key roles in the 1959 merger of Unitarians and Universalists that took place in Syracuse.

May Memorial Parish House (1940-1964)



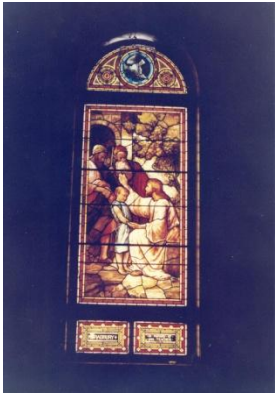
Increasing numbers of parishioners and their children meant that more space was needed for RE and other meetings. The house next door at 466 James St. was purchased for \$5,000 in 1940 and dedicated on Feb. 16, 1941.

Interior of James St. Church



The church auditorium was approached by an octagonal vestibule and side porches. Inside were high wainscotings and paneled ceilings. Pews, in cherry and in a crescent form, descended towards the pulpit 30 inches. The organ and choir were in a niche over the pulpit initially, but in the back of the auditorium after a renovation. Also in the rear of the auditorium were classrooms, over which were a parlor, kitchen, and social gathering spaces.

James St. Stained Glass Windows



Bradbury



Clary



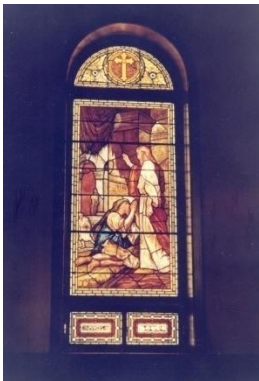
Cogswell/
Dana



Judson



May



Powers



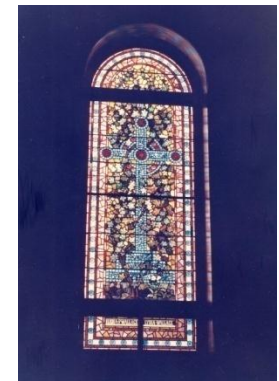
Putnam/
Phelps



Storer



Tracy

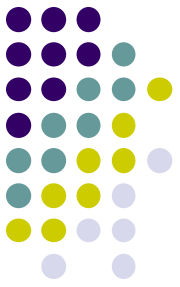


Wallace

For more information see

<http://www-distance.syr.edu/windows.html>

Our Current (Fourth) Church 3800 E. Genesee St. (1964→)



Built for a cost of nearly \$447,000, it was formally dedicated Oct. 10, 1964. The design architect was Pietro Belluschi, the overall building chairperson was Henry Mertens, and the organ was built by Walter Holtkamp. Rev. John Fuller was minister and Jo Gould was RE Director. It has served us well.